

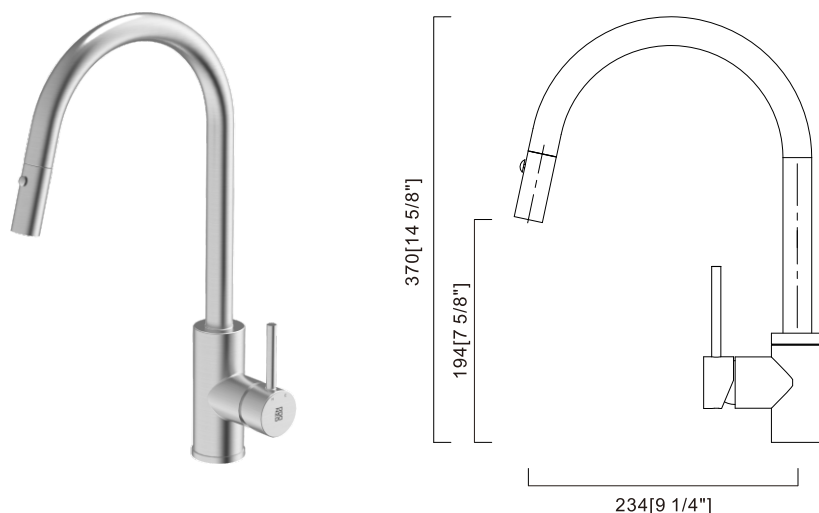
**ZO  
MO  
DO**  
ZOMODO.CA

## TAP INSTALLATION



**ZO  
MO  
DO**

ZO  
MO  
DO



## Care and Maintenance

In order to ensure proper function over the lifetime of the tap, smoothly operate the handle and pull-out spout during use. When installing do not over tighten the locking nut. Regularly clean the tap with a soft, damp cloth and avoid abrasive cleaners, steel wool, and strong chemicals.

## Working Specifications

Working pressure: 20-100 psi

Working temperature: 1-60°C

This tap must be installed in accordance with the AS/NZS 3500 series standard. All ZOMODO taps are strongly recommended to be installed by a licensed plumber. Improper installation may void the warranty.

## Notes

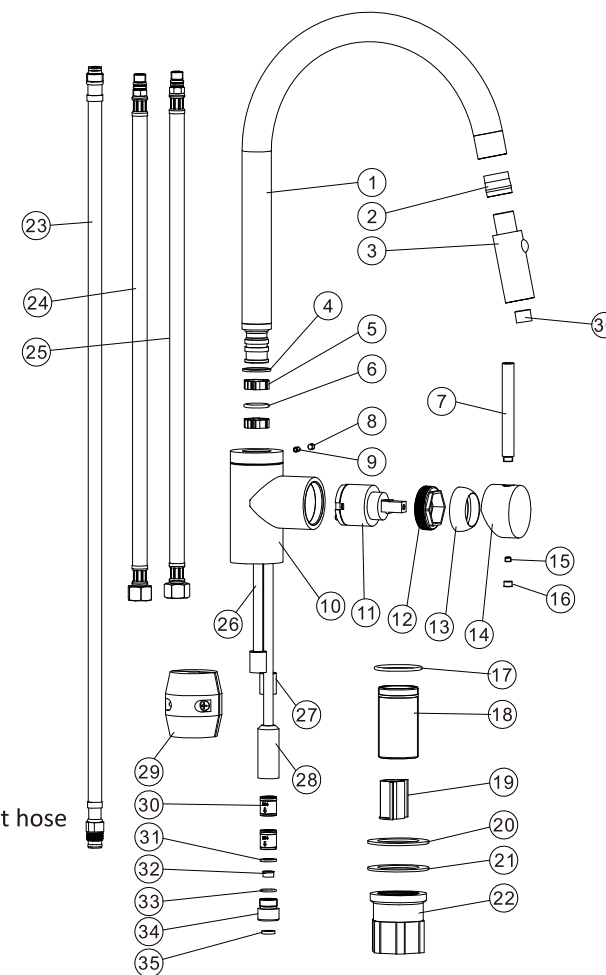
1. All pipework must be thoroughly flushed prior to installation as foreign materials may block the flow.
2. Aerator and the flow control can be removed with standard tool and cleaned.
3. If a screen-filter is fitted into the tap, remove it and flush the pipes and tap to remove grit. Then re-insert the screen.

KTC037-316-BR

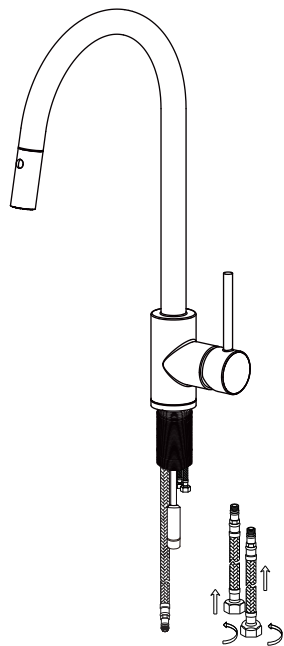
ZO  
MO  
DO

## Parts List

- 1 Elbow pipe
- 2 Plastic sleeve
- 3 Pull-out nozzle
- 4 Chafing ring
- 5 Fixed collar
- 6 O-ring
- 7 Handle bar
- 8 Silicone plug
- 9 Flat-head screw
- 10 Body
- 11 Faucet cartridge
- 12 Gland nut
- 13 Spherical cover
- 14 Handle
- 15 Screw
- 16 End cap
- 17 O-ring
- 18 Mounting screw
- 19 Protective sleeve
- 20 Flat washer
- 21 Washer
- 22 Mounting nut
- 23 Pull out hose
- 24 Flexible hose
- 25 Flexible hose
- 26 Braided hose (red)
- 27 Braided hose (blue)
- 28 Connection tube - pull out hose
- 29 Gravity ball
- 30 Check valve 6L
- 31 Rubber ring
- 32 Throttling disc
- 33 O-ring
- 34 Check valve plug
- 35 Rubber ring
- 36 Aerator



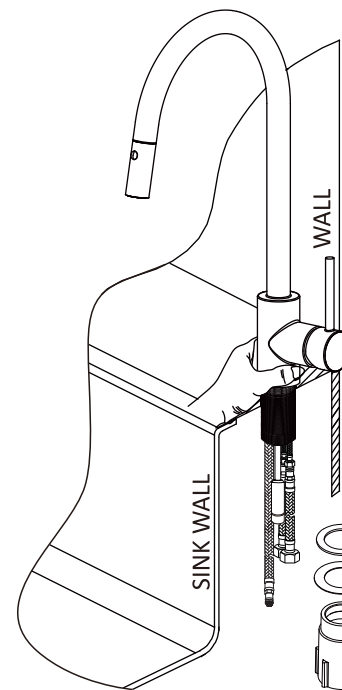
KTC037-316-BR



### Step 1

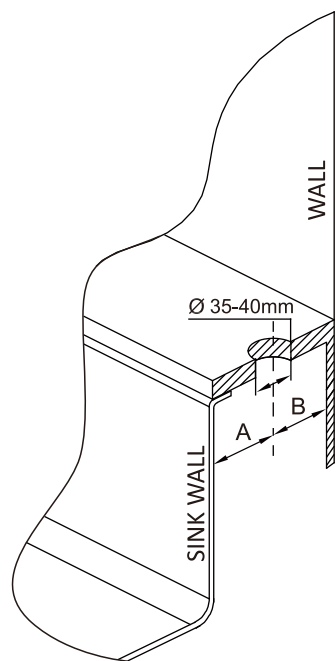
Attach the hoses (23) to the connection tube (25,26) and tighten firmly. Do not use thread tape, as the water-tight seal is provided by O-rings. Do not over tighten.

Note: Use the hose with RED braid-strands for the hot water connection. Connect hot water to the rigid pipe with red marking.



### Step 3

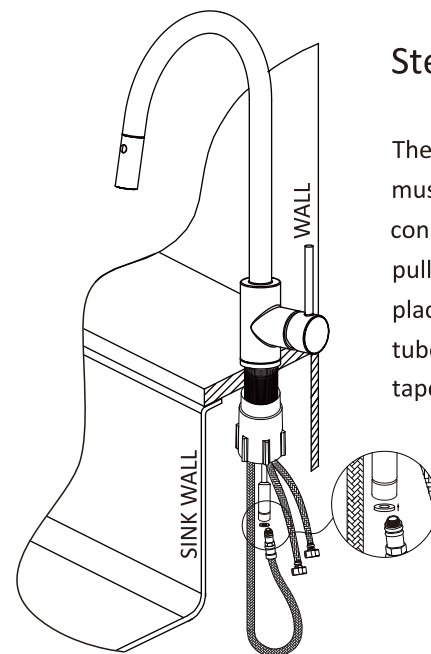
Insert the tap into the countertop and ensure the O-ring (17) is secure in the groove of the tap body. Then slide the washers (20 and 21) onto the threaded body of the tap followed by the nut (22) in the order shown in the diagram. Tighten the nut (22) by hand and ensure the tap is correctly aligned above the countertop.



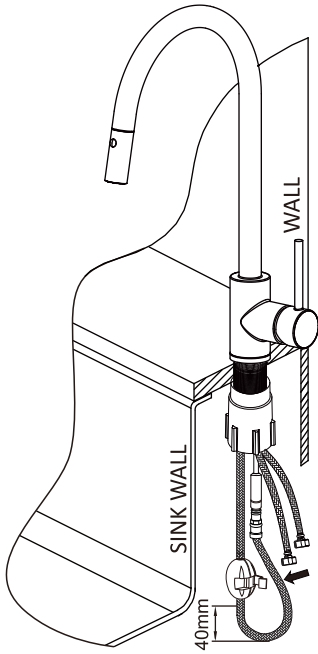
### Step 2

Locate a position in the countertop at least 50mm from the wall and with enough clearance to the rim/flange of the sink. Dim.A >50mm(2") and Dim.B >50mm (2"). If you need to locate the tap within these dimensions, you should ensure enough clearance for the mounting washers and nut (20,21,22). Cut a hole 35 to 40mm diameter into the countertop.

### Step 4

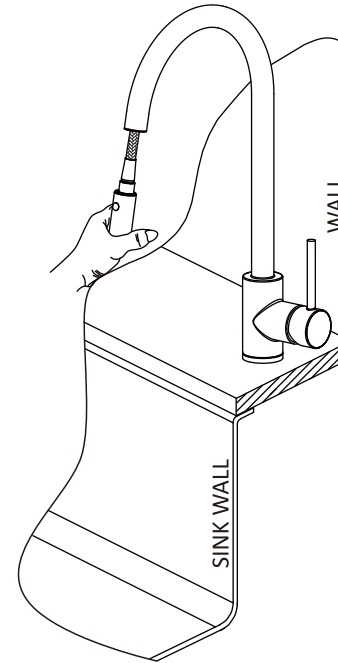


The washer (35) zip-tied to the pull out hose (23) must be placed inside the female housing of the connection tube-pull out hose (28) before the pull out hose (23) is inserted and screwed into place. Tighten pull out hose (23) into connection tube (28) with a small spanner. Do not use thread tape.



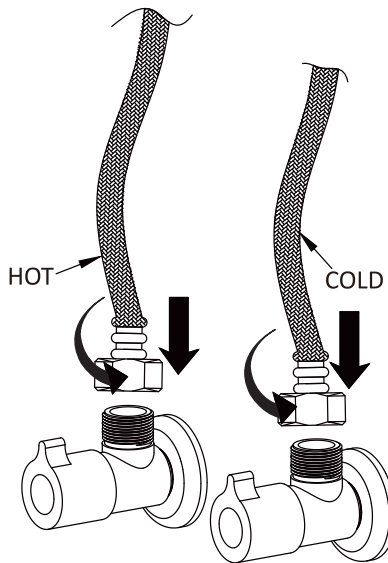
### Step 5

Fit the weigh onto the hose using the 2 screws provided. Position the weight about 40mm (1½") above the bottom of the hose (23) loop. This will ensure maximum extension and retraction.



### Step 7

Test the tap flow and mix functions, and hose pull-out. If the tap is fitted with dual spray/stream you should also ensure this is working properly. If any grit etc has entered the tap you can easily remove the aerator(36) and clean/reattach.



### Step 6

Flush the wall valves to ensure no grit enters the tap. Now attach the hoses to the wall valves ensuring the hose with RED braid attaches to the hot water outlet.

## Troubleshooting

1. If water is leaking from the connection tube joints (26,27,28) you should re-tighten the flexible hoses (24,25) and pull-out hose (23) and check that the washer (33) is in place. It is possible that these connections have loosened when the flexible hoses are tightened to the wall valves or the washer was not installed.
2. If the pull-out hose (23) is catching or not retracting fully, you should ensure that the weight (29) is located just above the bottom of the loop. Also ensure the weight/hose are not catching on items in the cabinet.
3. If the water stream is uneven it is possible that debris or grit has blocked the aerator. You can remove the tip of the spout and backflush the aerator. Firmly retighten the retaining nut.
4. If the tap is loose or rotating at the base as it enters the countertop you should re-tighten the nut (22) ensuring the handle lever assembly is correctly positioned.
5. If the spout (1) is loose at the connection to the body (10) you may need to gently tighten the small grub screw (9). Do not over tighten the grub screw or the spout will not rotate.