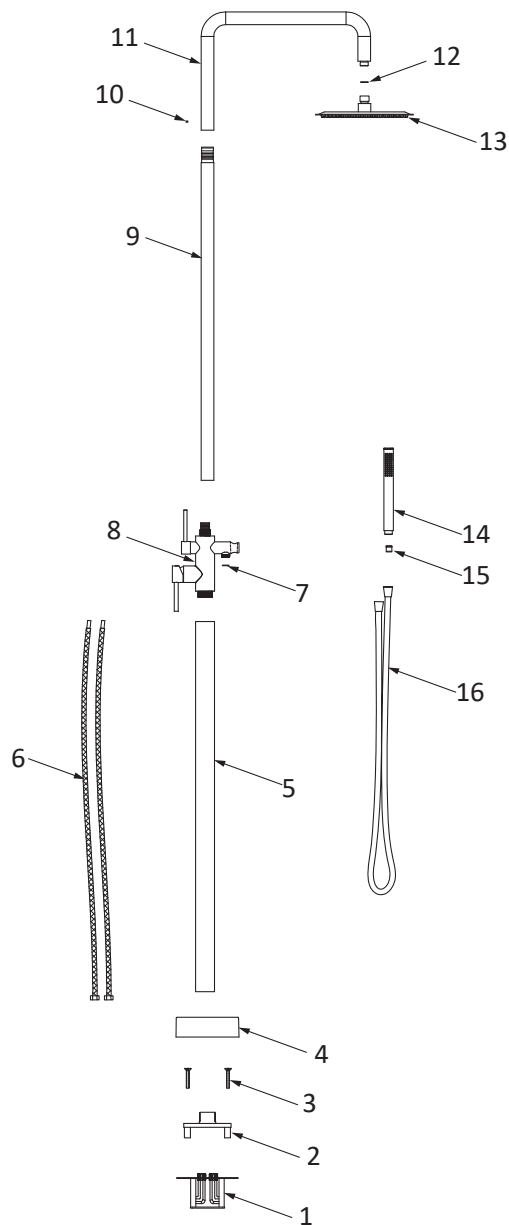


# RHS08-316C Installation Instruction

Two people are required for installation



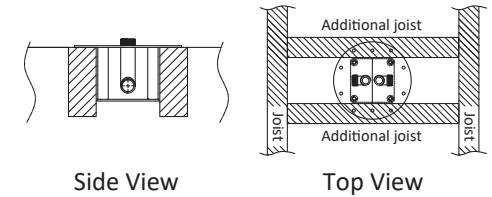
1. Embed the rough-in kit (1) into the ground then do the piping connection. Ensure 4 screws holes and 2 water inlet holes are covered with plugs. Ensure concrete pour is level with top plate. Remove hole plugs.

Concrete Floor



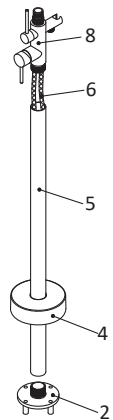
When installing into a wooden joists structure, build the additional joists, screw the rough-in kit (1) onto joists. Connect piping and fix deck boards.

Timber Floor

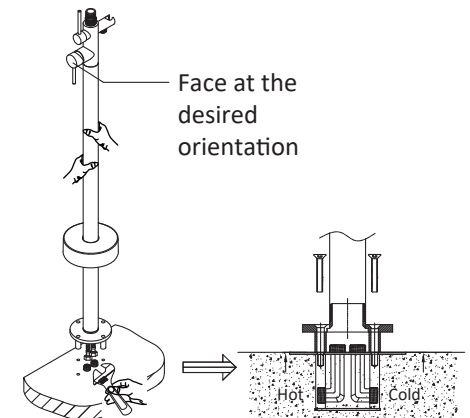


2. Attach long hoses (6) to the main valve assembly (8).  
Screw bottom stainless steel pipe (5) to the valve assembly (8).  
Slide the floor-cover (4) onto the bottom stainless steel pipe (5) from underneath.

3. Screw bottom floor plate (2) to the bottom stainless steel pipe (5).

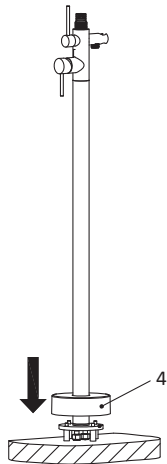


4. Place the shower assembly (2,4,5,6,8) over the rough-in kit (1). Position handles facing the desired orientation. Lift up the shower assembly, connect the hot/cold hoses to the rough-in kit outlets from underneath.

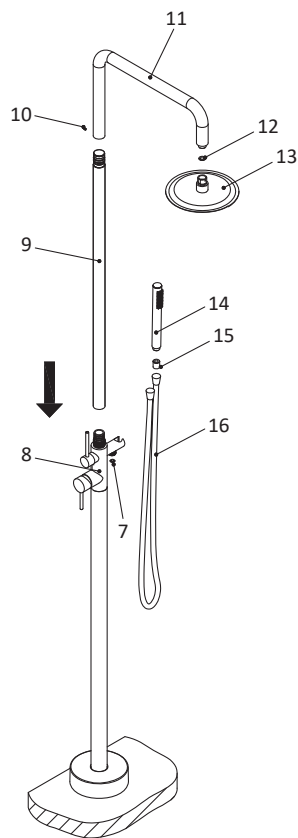


5. Line up 4 screw holes of bottom floor plate (2) and rough-in kit (1), Then screw in 4 x M8 bolts (3).

6. Slide down the floor-cover (4).



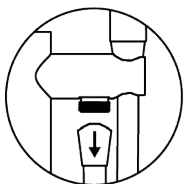
7. Screw the top stainless steel pipe (9) onto the valve body (8) and tighten securely.



8. Attach the rain head (13) to the top stainless steel shower arm (11) with flow control widget (12) in between. And then slide the arm assembly over the top tube (9) and tighten with grub screw (10).

9. Flush water through the hand shower hose, before attaching the hand shower (14) and flexible hose (16) to the valve body (8) with flow control widget (7) and check valve (15) in between.

PS: Connect the hose end with "arrow" mark to the body.



**Note:** The flow control should be inserted with the protruding side into the showerhead, taking care not to cause and damage to the flow controller. These showers may not be suitable for use with gravity fed waterheaters, low and unequal pressure supply networks, instantaneous water heaters, tempering valves and/or thermostatic mixing valves.

The removal of the overflow controller will void the warranty.

The following pressure range should be complied with:

- Minimum working pressure 150Kpa / 22psi
- Maximum working pressure 750Kpa / 109psi

All showers must be installed in accordance with applicable plumbing codes (UPC, IPC, or NPC).

All showers are manufactured to meet ASME A112.18.1 / CSA B125.1 standards and carry WaterMark certification (WM-032384) certification which is equivalent to cUPC certification.